

# INN ON 5TH

NAPLES | FLORIDA

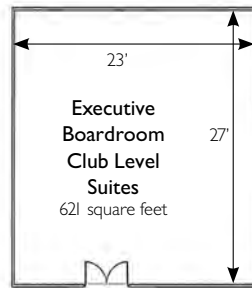
authenticallynaples distinctivelydowntown



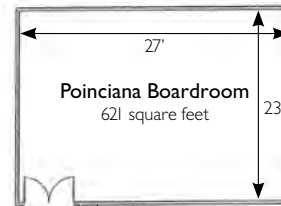
## Location, location, location.

Exclusivity, convenience and style are met with a friendly ambiance and a desirable downtown Naples setting. This makes the Inn on Fifth and Club Level Suites a favorite place to meet, to stay, to celebrate and to enjoy.

Located in the exclusive Club Level Suites, the **Executive Boardroom** is ideal for corporate gatherings of up to 25 people. Adjacent is the option for a hospitality suite with a large balcony overlooking 5<sup>th</sup> Avenue. The private concierge lounge and the rooftop courtyard provide options for social gatherings and add to the sophistication of your experience.

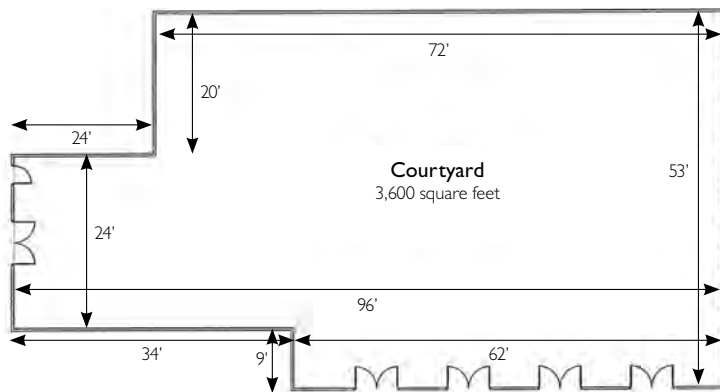


12' x 11' 6"  
Adjoining foyer  
139 square feet

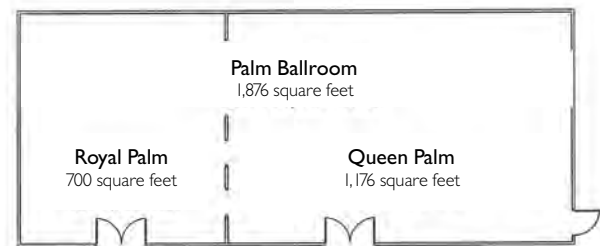


Entry foyer  
83 square feet

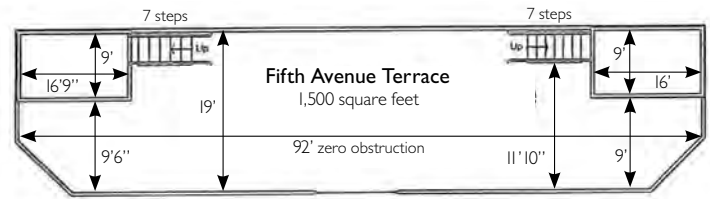
The **Poinciana Boardroom** is located directly off the lobby. Renovated in 2016, it is modern and elegant, featuring a private bathroom, a dry bar, big screen TV and drop-down screen. With its own entry foyer suitable for registration or food and beverage, this room is suitable for corporate meetings and stylish private dinners.



Located on our upper level, with blue skies or stars overhead, the **Courtyard** is perfect for corporate or social gatherings. Overlooking the pool's picturesque waterfalls and foliage islands, this versatile area can be as casual or elegant as you choose.



The luxurious **Palm Ballroom** can be divided into the Royal Palm and Queen Palm rooms, or left open to fit your needs. It is richly carpeted and glows with classic chandeliers.



The **Fifth Avenue Terrace**, with treetop views of graceful palms and scenic downtown Naples, is a cheery and convenient outdoor function area. Adjacent is the Terrace Suite, well suited for your CEO or another important guest of honor.

Meeting Space	Sq.Ft.	Ht.	Class Room	Hollow Square	U Shape	Theater	Reception	Banquet Rounds	Conf.	F&B Minimums				
										Corporate Nov-May	Corporate Jun-Oct	Social Nov-May	Social Jun-Oct	
Courtyard	3,600						150	150		\$4,000	\$3,000	\$10,000	\$6,000	
Palm Ballroom	67'x28'	1,876	11'	80	72	64	150	150	100	60	\$2,800	\$1,500	\$5,000	\$2,500
5th Ave. Terrace	42'x19'	1,500					125	80			\$4,000	\$3,000	\$10,000	\$6,000
Queen Palm	42'x28'	1,176	11'	48	46	38	100	100	80	40	\$1,800	\$1,000	\$4,000	\$2,000
Royal Palm	25'x28'	700	11'	24	26	16	50	50	40	20	\$1,200	\$700	\$1,500	\$1,000
Executive Boardroom + Foyer - Club Level	23'x27'	621	12'	32	26	16	50	50	40	20	\$1,000	\$1,000	\$2,000	\$1,500
Club Level Roof	48'x45'	2,000					100				with buyout only		\$10,000	\$7,000
Poinciana Boardroom + Foyer	23'x27'	621	12'	32	26	16	50	50	40	20	\$800	\$500	\$1,000	\$600
											\$600 half day	\$400 half day		